

# Property

Edited by Anna Leach  
property.sh@timeoutcn.com



**Art of glass** The Shanghai Museum of Glass (main and below right), Axor Bouroullec basin (below left) and lighting installation Dune (above right) have all been shortlisted for Successful Design prizes.

## Designs on the prize

China's Most Successful Design Awards rewards instances of top architecture and design in the Chinese market. One of the judges Cathy Huang talks **Anna Leach** through this year's shortlist

### Axor Bouroullec basin and mixer

**What is it?** A bathroom basin that can be simply reconfigured into dozens of different tap/shelves/basin arrangements according to personal preferences. Designed by Ronan and

Ewan Bouroullec for Axor bathrooms, an online tool lets customers choose the layout they want.

**The judges say** 'The Axor Bouroullec collection is about allowing people to design their own personal bathrooms. It's a matter of

individuality, shaping your life in line with your own personal vision. This is a very smart design to the last detail. It provides versatility and brings fun and elegance to bathrooms.'

*Available from Shanghai Homemart, 5288 Gonghe Xin Lu, near Yonghe Lu, Zhabei district (5648 8222). Open 9am-8pm daily. ☎ Tonghe Xinxun. 闸北区共和新路5288号, 近永和路*

### Bamboo chair-1 by Libo Design

**What is it?** A beautifully smooth piece of furniture designed to resemble the Chinese character for 'destiny'. Its sleek frame is made from sustainably harvested condensed bamboo.

**The judges say** 'Nowadays we live our lives surrounded by more and more artificial products, which cause problems for the environment. This design is sustainable, environmentally friendly and has a beautiful form. It's a low carbon piece that can be ecologically produced on a mass scale.'

### Dune by Daan Roosegaarde

**What is it?** Daan Roosegaarde, a Dutch artist and urban designer who recently opened an office in Shanghai, created this interactive piece of public art, which reacts when people walk past. Its grass-like wires topped with LEDs were first installed in a tunnel in Rotterdam and have been exhibited in Beijing, Moscow, Sydney, Toronto and Israel. Roosegaarde recently won a commission to design interactive lighting in Shanghai parks that will be developed with his team, Philips Asia and Tongji University.

**The judges say** 'High-tech design is about making technology fit for human beings. The relationship between humans and objects can't be isolated - technology brings us convenience as well as emotional interaction. We can feel all of these aspects in this design.'

### Fotile oven hood

**What is it?** This sleek oven hood was developed with Chinese cooking in



mind. It's more effective at diffusing steam and smoke than its European equivalents, which have dominated the market.

**The judges say** 'This piece of kitchen equipment features technological breakthroughs that make the product more practical and human-centred. Its clean and simple design suits contemporary architecture and interiors. It combines technological innovation with excellence in industrial manufacturing, adopting only eco-compatible processes in every stage of production.'

*Open 9.30am-4.30pm Tue-Sun, 4.30pm-9pm Sat. ☎ Tonghe Xinxun. 宝山区长江西路685号8楼, 近江杨南路*

### Shanghai Museum of Glass, interior design by Coordination Asia

**What is it?** The interior design, as well as the architecture of Shanghai Museum of Glass, was shortlisted for an award. The museum is one of the first in the country based on an interactive model of education.

**The judges say** 'Glass architecture is an iconic symbol of modernism. We can not live without glass products, but there's a lot that people don't know about glass.'

The Shanghai Museum of Glass is a dynamic space where every visitor will be inspired by the culture, technology, history and art of glass.'

### Shanghai Museum of Glass, architecture by Logon

**What is it?** German architects Logon transformed an old glass factory in Baoshan district into a cracking museum, the first about glass in China, which opened last May. Appropriately, the building uses a lot of glass and features a U-shaped façade enamelled with words in ten languages that are backlit by LEDs - meaning the museum is particularly stunning at night.

**The judges say** 'This complicated design contains aesthetics, functionality, technology and social culture. It keeps a good balance between functionality, providing experiences and a beautiful high-tech look that conveys the theme of architecture.' *Bldg 8, 685 Changjiang Xi Lu, near Jiangyang Nan Lu, Baoshan district (6618 1970; shmog.org; shmog@shmog.org).*



“  
High-tech design is about making technology fit for human beings

## \*Event watch 100% Design Shanghai

**What?** As well as China's Most Successful Design Awards (see opposite) this month sees 100% Design Shanghai, a showcase of design with hundreds of exhibitors. The projects and products on show have been approved by a panel of leading experts in interior design, and other design luminaries will discuss design in China at an accompanying conference.

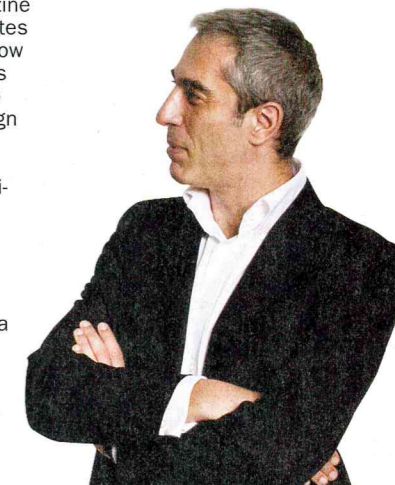
The programme features talks from architects, interior designers, artist Mi Qiu and editorial director of *Elle Decoration China* magazine Yan Mi. There will also be debates and panel discussions about how Chinese designers can harness their history to create design to rival that of contemporary design leaders in Japan and Europe.

Speaker Filippo Gabbiani (pictured), founder of Shanghai-based architects Kokaistudios says: 'In China there are many fairs but they are commercial fairs. It's important to have an event that doesn't just involve business and buyers, but also a lot of designers. To me China is a country where there is very little culture of design, so it's extremely important that there are exhibitions like this where innovations are celebrated.'

**When?** 9.30am-5.30pm Thursday 3-Friday 4; 9.30am-5pm Saturday 5

**How much?** The exhibition and conference are free but visitors must first register at [www.100percentdesign.com.cn/en/Conference/Conference-registration](http://www.100percentdesign.com.cn/en/Conference/Conference-registration)

**Where?** Shanghai Exhibition Center 1000 Yanan Zhong Lu, near Tongren Lu, Jingan district ([www.100percentdesign.com.cn/en](http://www.100percentdesign.com.cn/en)). ☎ Jingan Temple. 静安区延安中路1000号, 近铜仁路



### Compound:Spring in Garden

Address:No.999 Lou Shan Guan Rd/Chang Ning Rd(Chang Ning District)

**A.**  
Style:Apartment  
Detail:2 Living Rooms/1 bedroom/1 bathroom  
Size:62sqm  
Rent:4,600rmb/month

**B.**  
Style:Apartment  
Detail:2 Living Rooms/2 bedrooms/2 bathrooms  
Size:106sqm  
Rent:7,000rmb/month

### Compound:Regents Park

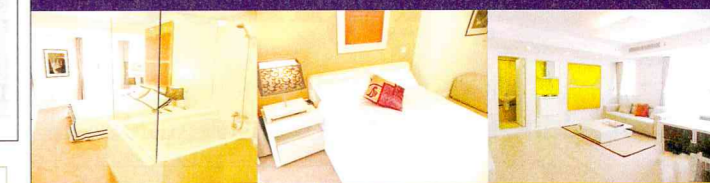
Address:No.88 Hui Chuan Rd/Chang Ning Rd(Chang Ning District)

Style:Apartment  
Detail:1 bedrooms/1 bathroom  
Size:43sqm  
Rent:5,800rmb/month

### Compound:New Space

Address:No.99 Hui Chuan Rd/Chang Ning Rd(Chang Ning District)

Style:Service Apartment  
Detail:1 bedroom/1 bathroom  
Size:41sqm  
Rent:4,300rmb/month



For More Information

137 - 6430 - 3109 [clarkzhou@slpintl.com.cn](mailto:clarkzhou@slpintl.com.cn)



We are professional real estate intermediary in Changning district.

Singapore | Shanghai | Jakarta